



# Protecting Courthouses & Government Facilities

Ensure the physical safety of anyone who visits your facility.





## Introduction

Protecting judges, jurors, court officials, operational staff and visitors to courthouses and government facilities safeguards the judicial process, ensuring the conduct of judicial proceedings. Given the nature of proceedings, courthouses remain especially vulnerable to crime including break-ins, unauthorized access, threats against judges, and violent acts.

As an extension of government, courthouses have become symbolic targets for anti-government extremists and domestic and international terrorists. Moreover, courthouses are being asked to do more with less, with tight budgets that limit manpower and technology resources. Ongoing hardening of physical security includes: separate entrances and elevators for judges, defendants and the public, metal detectors, bullet-resistant glass, and vehicle barricades to keep car bombs at bay. But, these measures are not enough.

Courts often rely on outdated technologies that fail to meet security needs. Litigants, victims, witnesses, judges, attorneys, court staff, and advocates are at risk to threats, assault, or intimidation. Local and federal courthouses face threats of different calibers, both can utilize technology to streamline operations and create safer proceedings.

**Advanced technologies such as facial recognition are fast becoming an essential solution for courthouses to cost-effectively protect their perimeters, entrances and courtrooms.**

## Fortifying Access Control

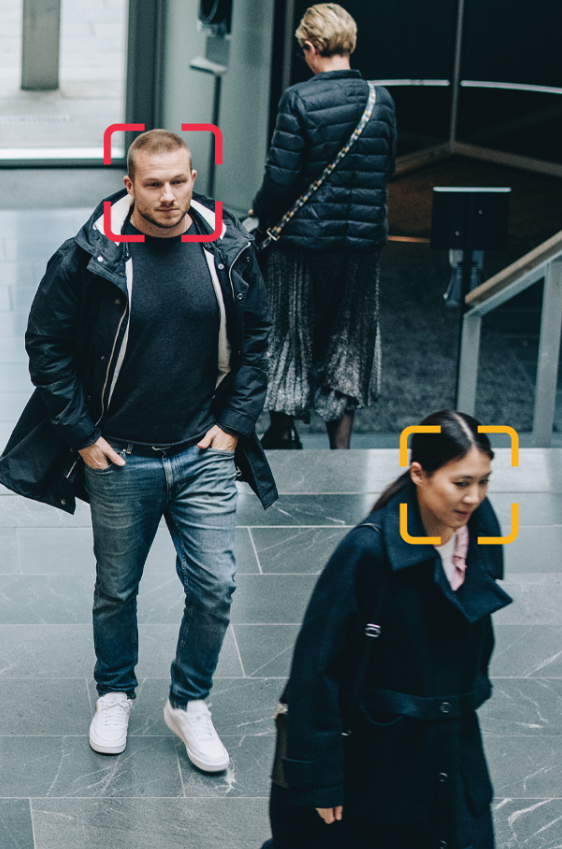
All persons entering a courthouse must be thoroughly screened to keep weapons and dangerous items out of the building. Security personnel and court staff must know and actively monitor all points of entry into the courthouse.

Courts need to limit points of entry into the building as well as after-hours access, which must be strictly controlled and available only to authorized persons. Increasingly, these courtrooms are turning to biometric-based solutions to enhance and secure courtroom access.

Oosto's OnAccess automatically identifies authorized people (e.g., judges, clerks, attorneys, jurors, witnesses, and litigants). Unlike traditional access control systems that rely on cardkeys, fobs, and keypads, OnAccess relies on a person's face, a unique biometric which cannot be lost, stolen, or shared. Some courtrooms now use facial recognition to pre-enroll facial images of authorized staff and visitors for courtroom access.







## Identifying Threats in Real Time

Real-time facial recognition technology offers a powerful layer of protection against threats. The technology is easily deployed and leverages affordable systems, and even avoids many of the privacy issues.

Courthouses usually have a well defined database of known threats — such as someone who was known to be angry with a specific judge because of a specific case. By definition, such facial recognition does not need to record photographs of everyone passing a camera and then run their images through a giant database of mugshots and arrest records. All that is needed is a quick comparison of their facial biometrics with those on a watch list in a local, limited database. Judges, prosecutors and law enforcement flag these known individuals, and the system sends an alert if an individual on the watchlist is identified at the courthouse entrance.

## Streamline Criminal Investigations

If a courtroom situation should occur, nothing can provide better documentation of the event than a digital video security camera system. A video surveillance system for courthouse use can not only spot incidents when they begin and document them as they occur, but help expedite forensic investigations after the fact. Video footage must often be captured from disparate sources — CCTV cameras, mobile phones, and even an officer's bodycam — to develop a more holistic understanding of a crime scene.

Traditional video analytics solutions require operators to comb through hours of video footage to identify suspects and other persons of interest. Oosto Inquiry enables security teams to search video archives quickly and find archived video that matches custom criteria within minutes, which is helpful in investigations.



**Courthouses must be a safe harbor to which members of the public come to resolve disputes that often are volatile. Once courthouses themselves are perceived as dangerous, the integrity and efficacy of the entire judicial process is in jeopardy.”**



— Hon. Ronald M. George Chief Justice of California, 1996-2010



# Oosto Capabilities

Maintaining the security of a courthouse is tantamount to maintaining justice. The very nature of the events that occur within a courthouse and the fact that individuals suspected of murder, manslaughter, and other violent crimes are brought to a courthouse for trial indicates the necessity for proven security measures.

Oosto's facial recognition-based solutions can uniquely help in a number of ways:



## Perimeter Security

Most courthouse security measures focus on the interior of the courthouse, but a robust video surveillance system can provide not only interior coverage but just as important, exterior coverage where undesirable events may first begin. OnWatch provides an early warning whenever a person on your watchlist (e.g., violent ex-employees, known felons, etc.) approaches the courthouse — well before that person sets foot inside the courtroom.



## Preserving Privacy

Often a roadblock to adoption of facial recognition technologies is the concern that massive databases of people are constructed to make the software usable. Oosto does not provide watchlists to our customers. Instead, courts can build a small, finite database of known threats (e.g., known felons, previous offenders, and dangerous ex-employees). This helps protect the unwarranted invasion of citizen privacy and bolsters public confidence in the technology.



## Leverage your Existing Cameras

Implementing facial recognition with your video surveillance system costs are relatively low since our solutions work with your existing cameras.



## Forensic Investigations

Expedite investigations by searching through hours of offline video footage for persons of interest in a matter of minutes. Incorporate video from multiple sources (e.g., CCTV cameras, iPhone videos, body-worn cameras, etc.) to perform a more holistic investigation.



## Visitor Management

As an added safeguard, courts can pre-enroll all visitors, courtroom staff, litigants and prospective jurors as part of the court's visitor management system and workflow. Pre-enroll subjects simply need to provide a picture (or selfie) of their face. When they arrive at the courtroom, Oosto automatically recognizes the subject based on the facial recognition software embedded within our access control reader (or leveraging existing CCTV video cameras). Anyone not enrolled would be unable to enter the courtroom.



## Granular Access Controls

Working with your existing access control system, Oosto not only determines who gets access to the courtroom, but also when and where they are allowed access. Different access permissions can be established for different groups within the courthouse.



## Lower Total Cost of Ownership

Oosto's neural networks can now be integrated inside existing smart cameras, near-edge devices, and access control systems to automatically identify authorized personnel and bad actors, without sacrificing detection quality. By leveraging existing hardware, your total cost of ownership is better optimized.



# Oosto's Solutions for Courthouses

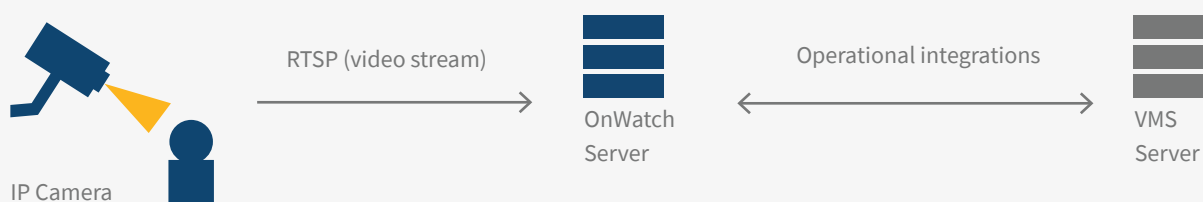
Oosto's solutions can be deployed in days, not weeks or months, because they leverage your existing cameras, access control, and VMS systems exploiting the power and security of edge computing.

## OnWatch

### Real-time watchlist alerting

Identify persons of interest in real-time with live facial recognition, enabling your security team to rapidly respond to threats as they occur.

#### How it Works

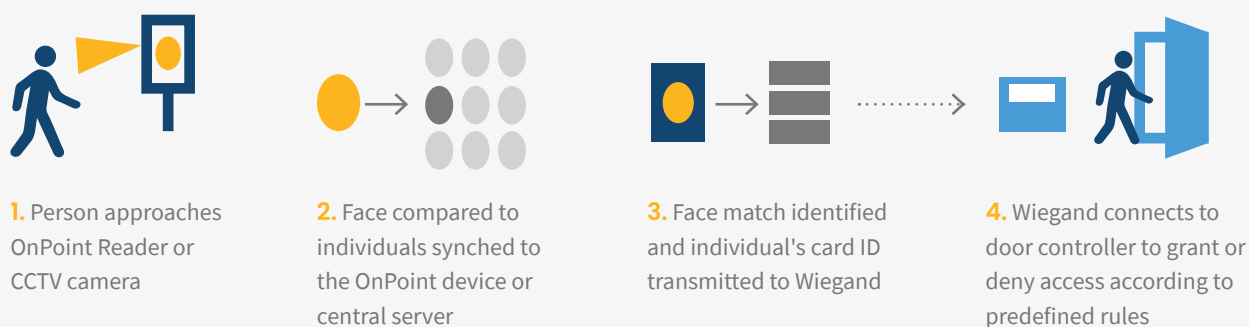


## OnAccess

### Touchless biometric-based access control

A frictionless access control solution that leverages the power of facial recognition to open guarded points of entry for authorized students, faculty and staff.

#### Automate Secure Entry



## About Oosto

Top-performing organizations use Oosto's AI-driven computer vision to improve the customer experience while enhancing safety. Our recognition technology is built into industry-leading touchless access control and automated watchlist alerting capabilities that perform with unrivaled accuracy, speed, and efficiency in the most challenging conditions.

Oosto's mission is to make the world a safer, more intuitive, and more connected place.



For more information, please contact us at: [info@oosto.com](mailto:info@oosto.com)

030823-EN

*Oosto does not offer, sell or make available any of its products or services to customers in the EU for the use of real-time remote biometric identification systems in publicly accessible spaces for the purposes of law enforcement or any of the other prohibited AI practices as outlined in the EU AI Act.*